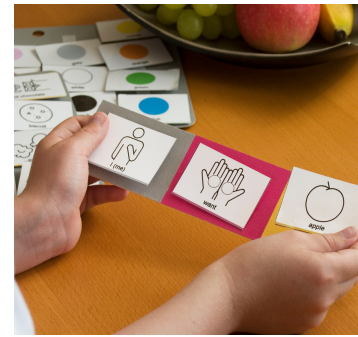




*Home, Community, and Center-Based Services for Individuals with autism and related disorders.*



Every service delivery and treatment plan is tailored to our client's current needs and all services begin with rapport building. Parent-training is provided in addition to direct-instruction.

## Program Goals

-  Increase Independence
-  Improve Leisure Skills
-  Reduce Challenging Behavior
-  Build Routines
-  Social Skills Groups
-  Partner with Families

### Home and Community-Based Services Area:

Acton, Ashland, Ayer, Berlin, Bolton, Boxborough, Boylston, Clinton, Devens, Framingham, Grafton, Harvard, Holden, Hopkinton, Hudson, Lancaster, Littleton, Marlborough, Maynard, Milford, Millbury, Northborough, Shrewsbury, Southborough, Sterling, Stow, Sudbury, West Boylston, Westborough and Worcester.

**Center-Based Services:** Marlborough, MA

### FUNDING AVAILABLE THROUGH:

- School Districts
- Aetna
- Allways Health Partners
- Blue Cross Blue Shield
- Cigna
- Harvard Pilgrim Health Care
- MassHealth
- United Healthcare
- Children's Autism Waiver Program (DDS)

## Why Choose our Elevate Program?



Data-informed  
Programming



Well-Trained Staff



Innovative  
Learning Spaces



Generalize skills in  
Different Settings